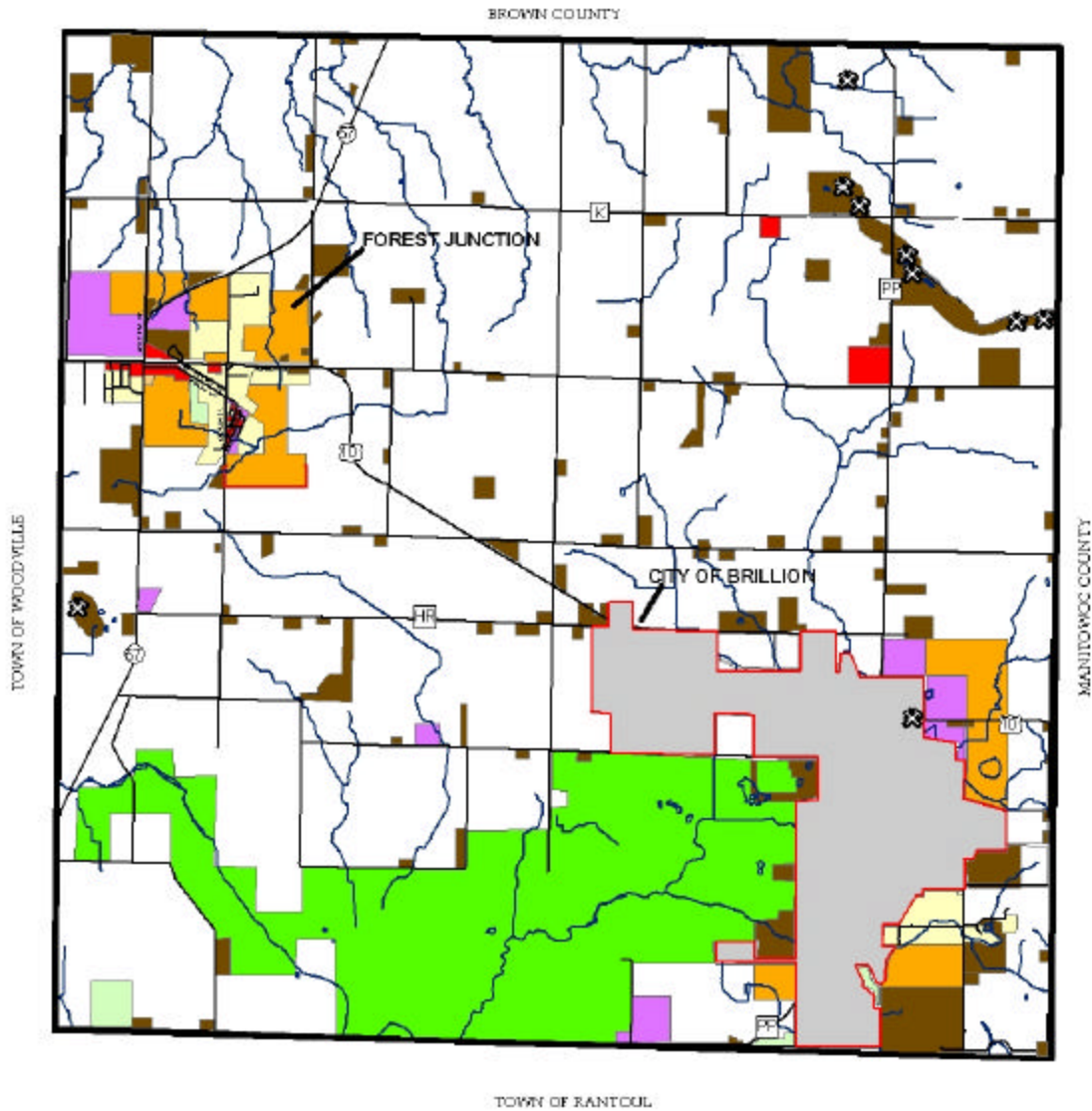


EXISTING ZONING

TOWN OF BRILLION



OMNI
ASSOCIATES

PROJECT # M1029401
DATE: 7/22/2002
DRAWN BY: KAL
REVISION: 007110883

Location: F:\MUNICIPAL\095\M1029401\0952\zoning_11x17.mxd
Source: CALUMET COUNTY PLANNING DEPT.

Legend

- CITY OF BRILLION
- TOWN BOUNDARY
- A-1 (EXCLUSIVE AGRICULTURE)
- A-2 (TRANSITIONAL AGRICULTURE)
- A-3 (GENERAL AGRICULTURE)
- COMMERCIAL (C-1 & C-2)
- INDUSTRIAL
- RESIDENTIAL
- RECREATIONAL
- CONSERVANCY
- NON-METALLIC MINING
(yellow & red and granite)

