

# City of Brillion

## 2011 Annual Budget



*A Great Place to Live - Work - Learn - Play  
Together*

# CITY OF BRILLION

## 2011 ANNUAL BUDGET

FISCAL YEAR  
JANUARY 1<sup>st</sup> - DECEMBER 31<sup>st</sup>



### **BRILLION COMMON COUNCIL**

Gary Deiter, Mayor  
Betty Nies, Council President, Alderperson District 1

Carrie Wenzel, Aldermanic District 1  
Steve Schleis, Aldermanic District 2  
Mel Edinger, Aldermanic District 2  
Vacant, Aldermanic District 3

Larry VanFrachen, Aldermanic District 3  
Heather Gruett, Alderperson At Large  
Cheryl Welch, Alderperson At Large  
Bob Brick, Alderperson At Large

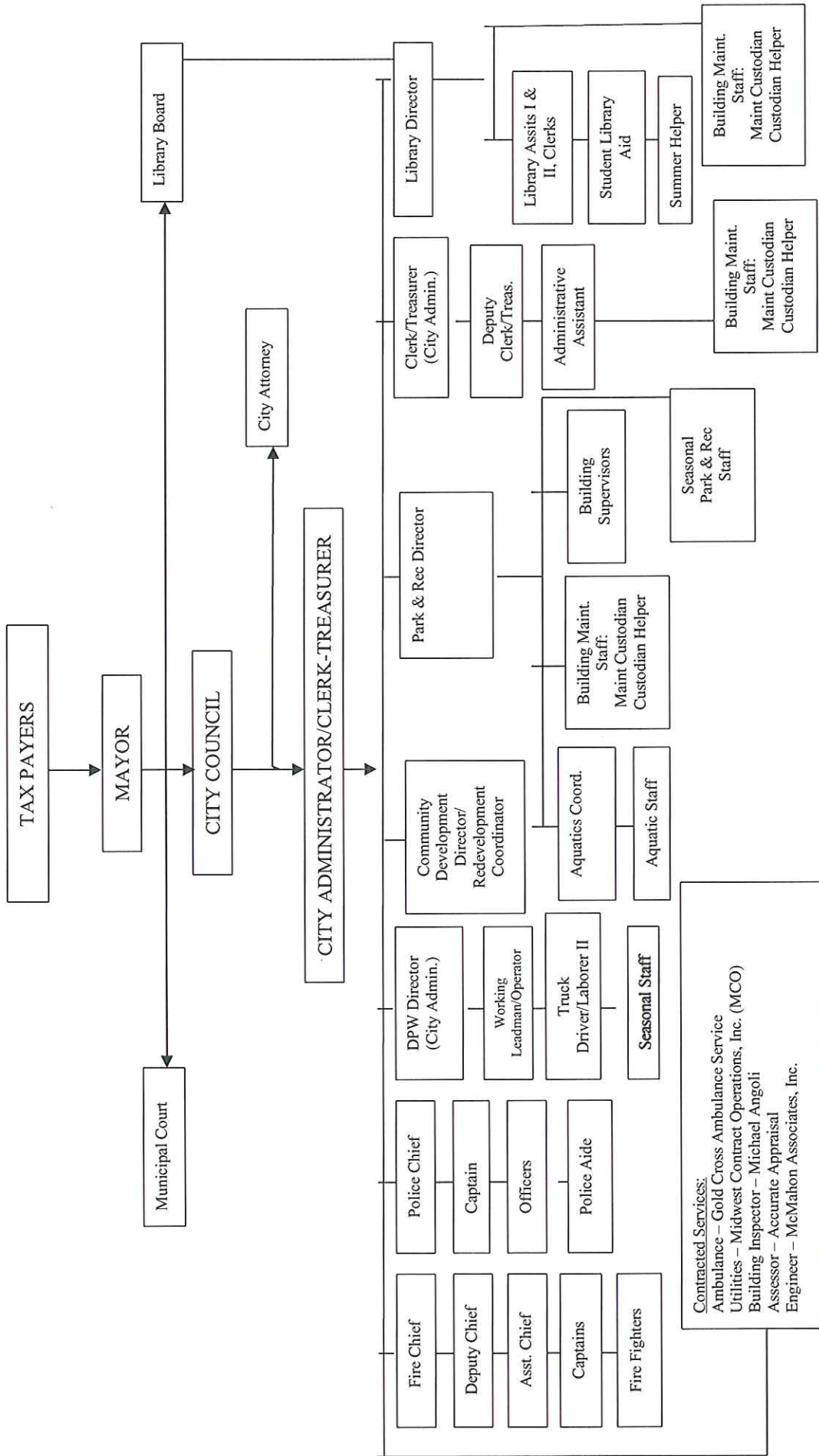
Lori M. Gosz, City Administrator/Clerk-Treasurer

#### **Mission Statement**

*Brillion --- dedicated to being a GREAT place to  
Live, Work, Learn and Play – together*

Adopted 11/22/10

# CITY OF BRILLION ORGANIZATIONAL CHART



**NOTICE  
CITY OF BRILLION  
2011 ADOPTED BUDGET**

NOTICE IS HEREBY GIVEN, that copies of the approved 2011 budget are on file in the City Clerk/Treasurer's office at 130 Calumet Street and at the Brillion Public Library at 326 N Main Street, Brillion Wisconsin. A copy of the 2011 budget can also be found on the City website at [www.ci.brillion.wi.us](http://www.ci.brillion.wi.us).

	2009 Actual	2010 Approved	2010 Est Year End	2011 Adopted
<b>GENERAL FUND REVENUES</b>				
Taxes	\$ 1,248,015	\$ 1,208,113	\$ 1,209,915	\$ 1,179,698
Payments in Lieu of Taxes	\$ 71,281	\$ 71,478	\$ 80,197	\$ 80,236
Special Assessments	\$ -	\$ 2,000	\$ -	\$ -
Intergovernmental Revenues	\$ 1,009,751	\$ 991,908	\$ 987,074	\$ 1,005,741
Licenses & Permits	\$ 53,282	\$ 44,942	\$ 60,020	\$ 61,079
Fines & Forfeitures	\$ 13,101	\$ 14,325	\$ 14,709	\$ 14,825
Charges for Services	\$ 297,760	\$ 358,118	\$ 360,068	\$ 385,415
Miscellaneous Income	\$ 24,521	\$ 40,000	\$ 13,138	\$ 8,000
Income - Other Sources	\$ -	\$ -	\$ -	\$ -
Subtotal - General Fund Revenues	\$ 2,717,711	\$ 2,730,884	\$ 2,725,121	\$ 2,734,994
<b>CAPITAL/RESERVE REVENUES</b>				
Tax Revenues	\$ 142,910	\$ 143,020	\$ 143,020	\$ 268,665
Intergovernmental	\$ 58,844	\$ 27,799	\$ 150,142	\$ 18,592
Special Assessments	\$ 7,478	\$ 16,300	\$ 8,697	\$ 12,773
Other Revenues	\$ 40,877	\$ 34,000	\$ 13,736	\$ 20,000
Subtotal - Capital Revenues	\$ 250,109	\$ 221,119	\$ 315,595	\$ 320,030
Add: Applied TIF Revenues	\$ -	\$ -	\$ -	\$ -
Add: Transfer Utilities	\$ -	\$ -	\$ -	\$ -
Add: Applied Fund Balance	\$ 106,664	\$ 50,000	\$ 50,000	\$ 53,227
Subtotal - Other Revenues	\$ 106,664	\$ 50,000	\$ 50,000	\$ 53,227
<b>Total Revenues / Other Sources</b>	<b>\$ 3,074,484</b>	<b>\$ 3,002,003</b>	<b>\$ 3,090,716</b>	<b>\$ 3,108,251</b>

<b>GENERAL FUND EXPENDITURES</b>				
General Government	\$ 326,139	\$ 334,026	\$ 304,945	\$ 308,881
Public Safety	\$ 905,355	\$ 932,319	\$ 941,033	\$ 986,812
Public Works	\$ 253,662	\$ 273,416	\$ 247,741	\$ 282,616
Sanitation	\$ 144,899	\$ 150,805	\$ 131,814	\$ 154,817
Health & Human Services	\$ 6,305	\$ 5,504	\$ 6,975	\$ 7,762
Culture & Recreation	\$ 706,049	\$ 668,928	\$ 638,837	\$ 609,351
Conservation & Development	\$ 42,485	\$ 49,976	\$ 42,296	\$ 56,607
Debt Retirement	\$ 347,442	\$ 365,911	\$ 365,911	\$ 381,375
Transfer- Other Funds	\$ -	\$ -	\$ -	\$ -
Subtotal Expenditures	\$ 2,732,336	\$ 2,780,884	\$ 2,679,551	\$ 2,788,221
<b>CAPITAL/RESERVE EXPENDITURES</b>				
General Government	\$ 190,895	\$ 5,000	\$ 18,429	\$ 15,500
Public Safety	\$ 44,436	\$ 89,120	\$ 78,229	\$ 82,040
Public Works	\$ 424,743	\$ 67,000	\$ 213,237	\$ 199,500
Sanitation	\$ 6,423	\$ -	\$ 2,833	\$ -
Health & Human Services	\$ -	\$ -	\$ -	\$ -
Culture & Recreation	\$ 18,809	\$ 27,999	\$ 15,560	\$ 13,490
Conservation & Development	\$ 39,961	\$ 22,500	\$ 4,073	\$ -
Technology	\$ 4,921	\$ 9,500	\$ 4,606	\$ 9,500
Debt Service	\$ -	\$ -	\$ -	\$ -
Subtotal Expenditures	\$ 730,188	\$ 221,119	\$ 336,967	\$ 320,030
<b>TOTAL EXPENDITURES</b>	<b>\$ 3,462,524</b>	<b>\$ 3,002,003</b>	<b>\$ 3,016,518</b>	<b>\$ 3,108,251</b>

**LEVY / MILL RATE SUMMARY**

AGENCY	2010	2009	2011	2010
	LEVY	MILL RATES	LEVY	MILL RATES
State of Wisconsin	\$ 31,162.45	\$ 0.17	\$ 31,914.98	\$ 0.168
Calumet County	\$ 909,814.15	\$ 4.864	\$ 974,115.66	\$ 5.118
Brillion School District	\$ 1,697,664.55	\$ 9.077	\$ 1,875,859.22	\$ 9.856
Fox Valley Technical College	\$ 314,995.56	\$ 1.684	\$ 334,647.26	\$ 1.758
City of Brillion	\$ 1,464,437.10	\$ 7.830	\$ 1,597,845.47	\$ 8.395
<b>TOTAL LEVY / MILL RATE</b>	<b>\$ 4,418,073.81</b>	<b>\$ 23.622</b>	<b>\$ 4,814,382.59</b>	<b>\$ 25.295</b>
<b>SCHOOL TAX CREDIT</b>		<b>1.5805</b>		<b>0.0000</b>
<b>TAX RATE</b>	<b>\$ 4,418,073.81</b>	<b>\$ 22.041</b>	<b>\$ 4,814,382.59</b>	<b>\$ 25.295</b>

Assessed Valuation  
2009 - \$187,033,674  
2010 - \$190,330,000

Cash on Hand (9-30-10) \$ 1,348,247  
Non Lapsing Reserves (9-30-10) \$ 1,525,123

Equalized Valuation  
2009 - \$183,626,000  
2010 - \$188,060,300

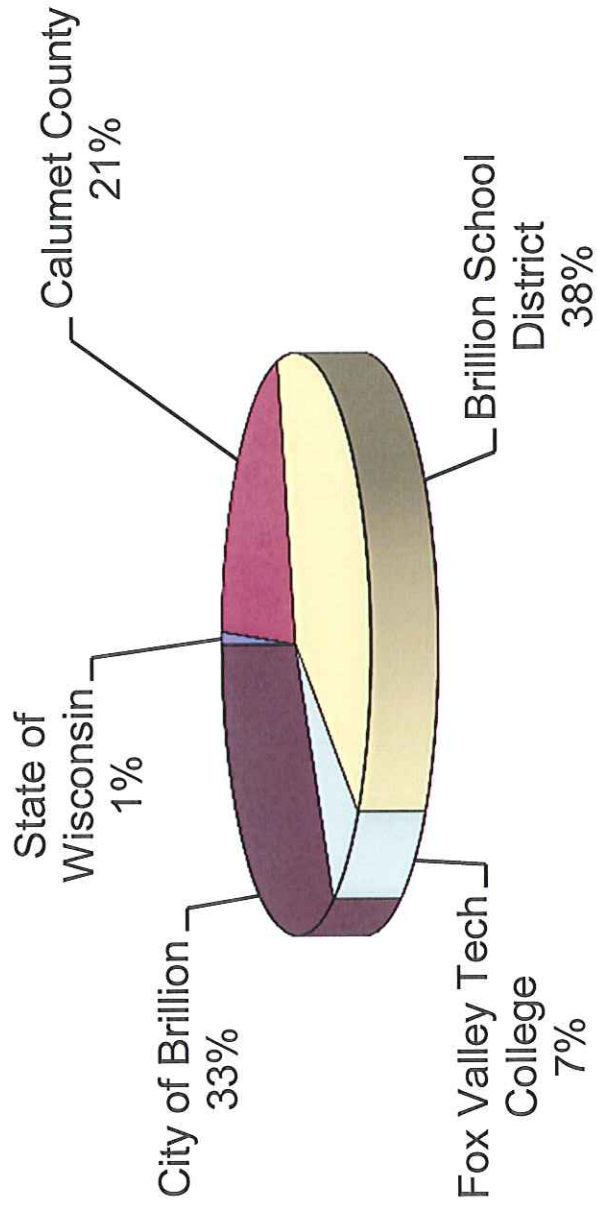
Fund Balance (1-1-10) \$ 919,107  
Fund Balance (Estimated 12-31-10) \$ 1,014,677

Note: At the time of this publication the 2010 School Tax Credit information was not available.

Notice is given under my hand and the Corporate Seal of the City of Brillion on this 23rd day of November, 2010.

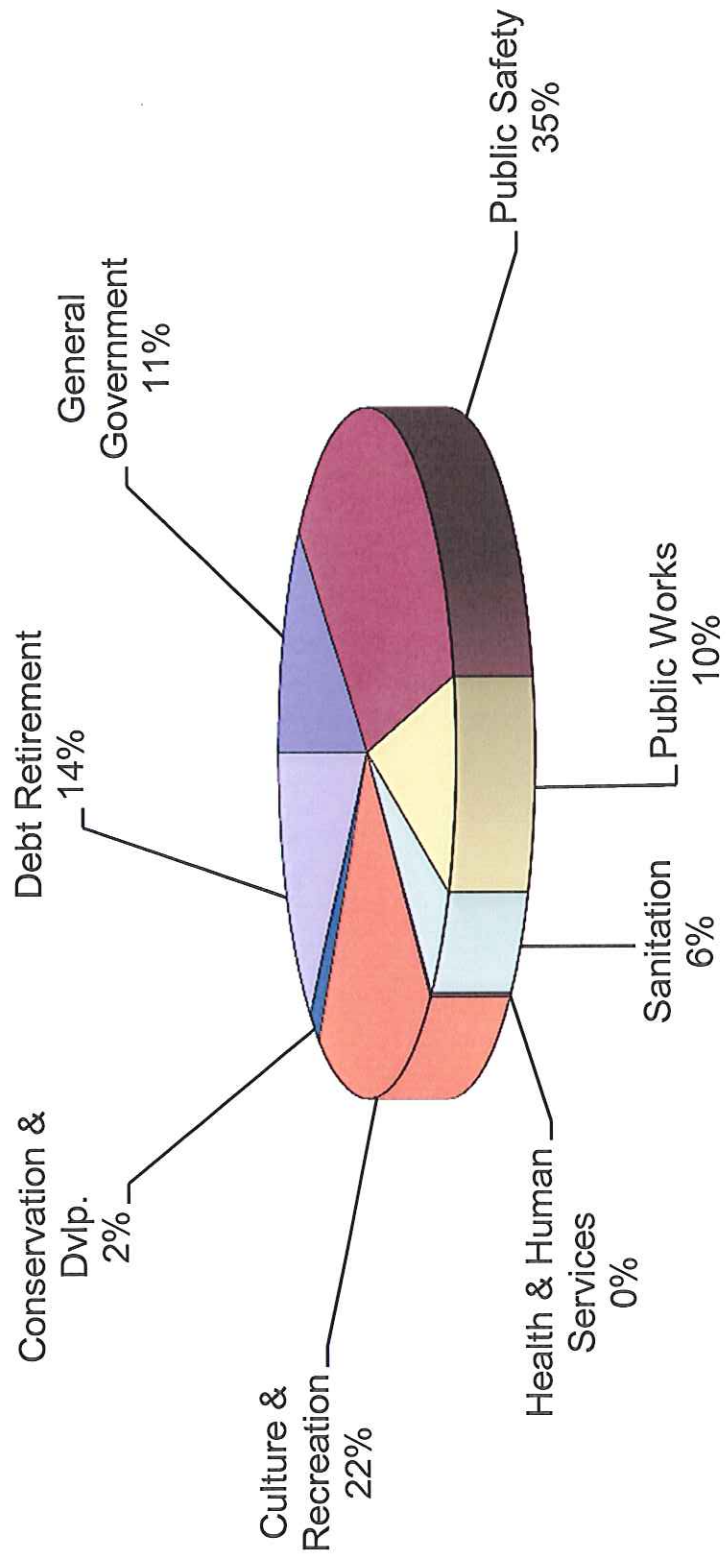
  
 Lori M. Gosz, CMC  
 Administrator/Clerk/Treasurer

# 2011 TAX LEVY DISTRIBUTION

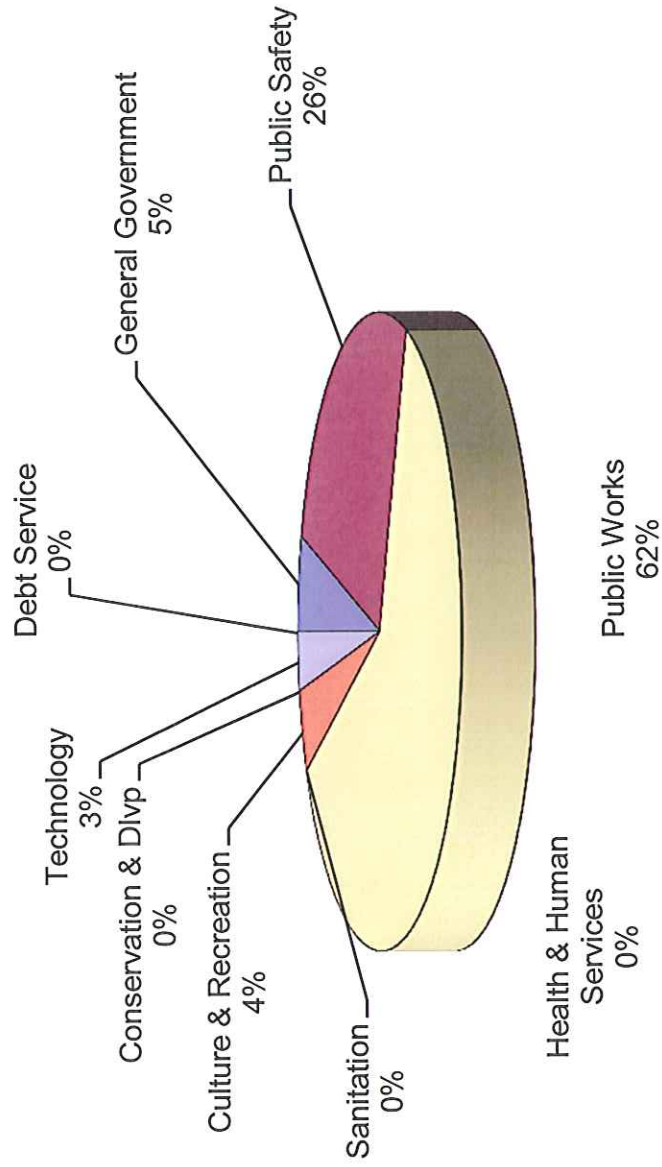


# 2011 OPERATING BUDGET

\$2,788,221



# 2011 CAPT & RESERVE BUDGET \$320,030



**Tax Rate Comparison  
2007-2011**

Population	2007 2998		2008 3001		2009 2989		2010 2986		2011 3028						
	AGENCY	07 LEVY	07 MILL RATE	08 LEVY	08 MILL RATE	09 LEVY	09 MILL RATE	2010 LEVY	10 MILL RATE	2011 LEVY	2011 MILL RATE				
STATE	\$	28,676.31	0.194746003	\$	29,565.01	0.196952746	\$	29,336.63	0.167659634	\$	31,162.45	0.166615517	\$	31,914.98	0.167682341
CALUMET COUNTY	\$	832,909.02	5.656435662	\$	860,977.63	5.735560667	\$	842,136.49	4.812832832	\$	909,814.15	4.86448126	\$	974,115.66	5.118035333
SCHOOL DISTRICT	\$	1,395,637.15	9.478024079	\$	1,588,405.22	10.58145321	\$	1,497,445.95	8.557944076	\$	1,697,664.55	9.076861956	\$	1,875,859.22	9.855825235
FOX VALLEY TECH	\$	273,636.68	1.85831614	\$	290,858.71	1.937608735	\$	290,854.07	1.662238875	\$	314,995.56	1.684179138	\$	334,647.26	1.758247559
CITY OF BRILLION	\$	1,354,634.37	9.199566791	\$	1,762,475.48	11.74105423	\$	1,768,905.34	10.10934166	\$	1,464,437.10	7.829870394	\$	1,597,845.47	8.395131989
TOTAL	\$	3,885,493.53	26.38708868	\$	4,552,282.05	30.19262958	\$	4,428,678.49	25.31001728	\$	4,418,073.81	23.62200827	\$	4,814,382.59	25.29492246
(-) STATE CREDIT	\$		1.78	\$		1.88	\$		1.76	\$	estimate	\$	1.58	\$	1.50
NET TAX RATE			24.6102			28.3135			23.5484				22.0415		23.7944
% DIF. ( TAX RATE)			-0.23%			14.42%			-16.17%				-6.67%		7.08%
% DIF. (NET TAX RATE)			-1.43%			15.05%			-16.83%				-6.40%		7.95%
ASSESSED VALUATION															
2006 \$		147,249,800	0.881%												
2007 \$		150,112,200	1.944%												
2008 \$		174,977,300	16.564%												
2009 \$		187,032,100	6.889%												
2010 \$		190,330,000	1.763%												
EQUALIZED VALUATION															
2006 \$		163,294,500	2.07%												
2007 \$		174,213,000	6.69%												
2008 \$		172,867,300	-0.77%												
2009 \$		183,626,000	6.22%												
2010 \$		188,060,300	2.41%												
ASSESSMENT RATIO (%)															
2006		0.8914	-2.07%												
2007		0.8612	-3.39%												
2008		1.0109	17.38%												
2009		1.0141	0.32%												
2010		1.0121	-0.20%												